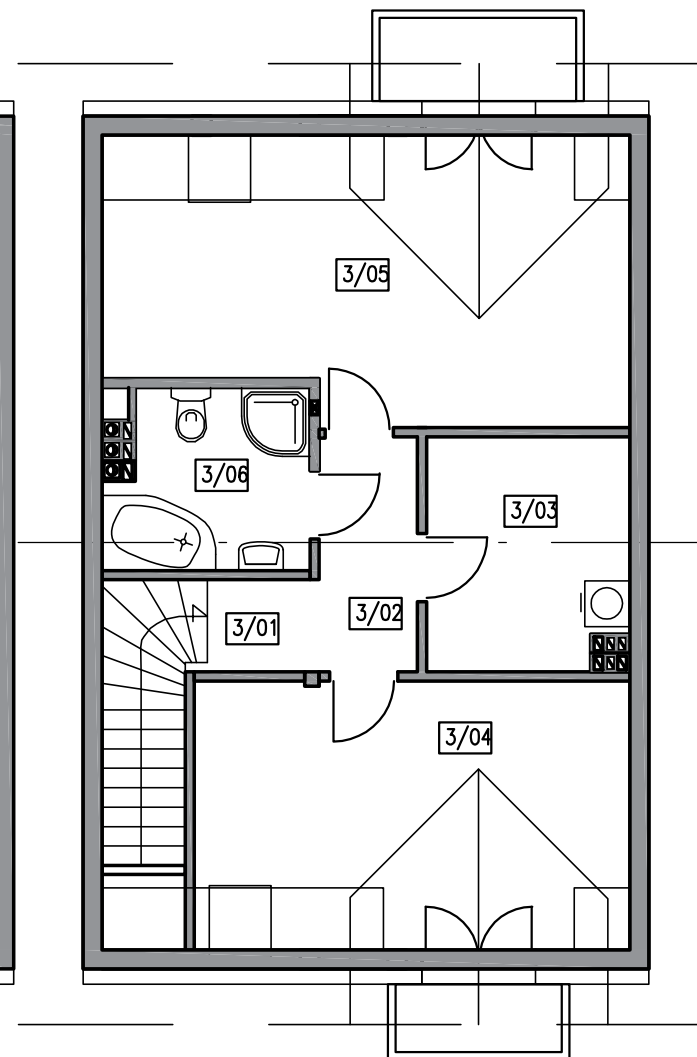
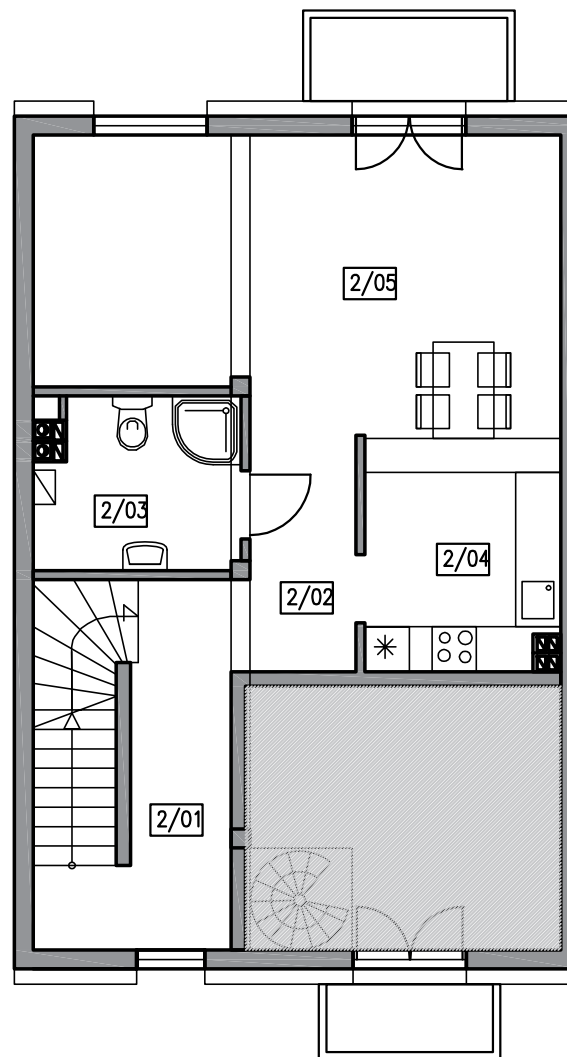
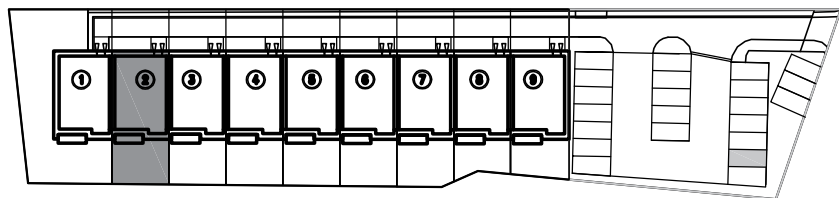


# LOKAL 2/2

pow. podłóg 128,2  
pow. użytkowa 116,8



| PIĘTRO |                    | POW. UŻYTKOWA        | PODDASZE |                    | POW. UŻYTKOWA        |
|--------|--------------------|----------------------|----------|--------------------|----------------------|
| 2/01   | WIATROŁAP + SCHODY | 5,69 m <sup>2</sup>  | 3/01     | SCHODY             | 4,46 m <sup>2</sup>  |
| 2/02   | HOL                | 12,54 m <sup>2</sup> | 3/02     | KORYTARZ           | 5,90 m <sup>2</sup>  |
| 2/03   | ŁAZIENKA           | 5,95 m <sup>2</sup>  | 3/03     | POM. GOSP./PRALNIA |                      |
| 2/04   | KIUCHNIA           | 7,93 m <sup>2</sup>  | 3/04     | POKÓJ              | 19,13 m <sup>2</sup> |
| 2/05   | SALON              | 25,84 m <sup>2</sup> | 3/05     | POKÓJ              | 23,25 m <sup>2</sup> |
|        |                    |                      | 3/06     | ŁAZIENKA           | 6,11 m <sup>2</sup>  |